

QUEENSLAND MINING & ENGINEERING EXHIBITION MACKAY SHOWGROUND - 27-29 JULY 2010

STAND #1115

Australia's mining sector will be the first to view the latest line up of heavy-duty industrial gear units from SEW-EURODRIVE, at the Queensland Mining & Engineering Exhibition 2010.

Encompassing three series of helical and helical-bevel gear units, the drive solutions on show have been specifically designed for heavy-duty applications with high transmitted loads, making them ideal for the needs of mining, quarrying, mineral processing and powerful engineering processes. Available separately or as part of a complete drive solution, SEW-EURODRIVE's gear-unit offering delivers extremely compact and versatile drive options for Australia's natural resources and heavy engineering industries.

Taking centre stage on the SEW-Eurodrive stand will be the Australian-assembled X-Series. "This series boasts the finest torque-graduation on the market, allowing users to closely match an X-Series gear-unit to their application. This provides unrivalled gear-unit choice and flexibility for the mining industry," said SEW-EURODRIVE Queensland Manager, Garry Jarvis.

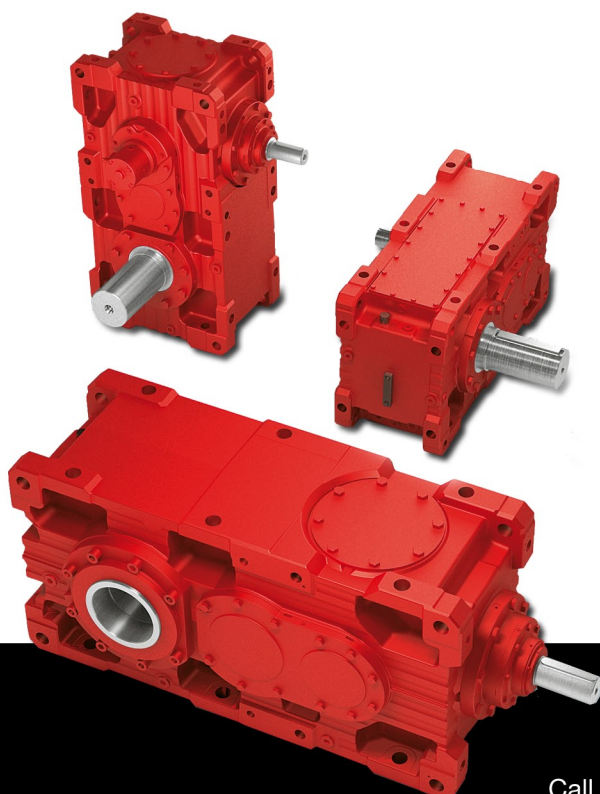
"The X-Series is ideally suited to applications ranging from conveyor systems, to ball mills and agitators." The entire X-Series range is offered in a choice of 15 sizes with torque ratings ranging from 58 to 475 kNm.

Also on show will be the X-Series' smaller 'stable-mate', the MC Compact Series. Offered with the option of an extended bearing distance (EBD) and reinforced output, SEW-Eurodrive's MC Compact Series is available in seven sizes, rated from 6 to 48kNm. "The EBD version—normally assembled as a parallel vertical shaft design—provides freedom in system design as it requires remarkably little space," said Jarvis. "This is ideal for mixing, agitating, and thickener applications in the mining and minerals processing industry."

To complete the line-up of gear-units on show from SEW-Eurodrive will be the planetary P-Series. "These gear-units are available in nine sizes, and provide a perfect gear solution for any application where large weights need to be moved at low speeds, such as apron feeders," said Jarvis. "With the gear-motor direct-coupled to the planetary gearbox, these gear-units deliver an energy-efficient drive solution that is both robust and extremely compact."

SEW-Eurodrive's complete in-house package offering is supported by an exemplary level of customer service that encompasses after-sales support, spares and servicing. "We have a very good infrastructure in place that enables us to deliver comprehensive support to the end user, even for remote mine site locations," said Jarvis. "With large stock levels of industrial gear-units held, SEW are well placed to respond extremely quickly to customer break-downs. We provide the fastest turnaround possible to ensure end-users can get back into production as quickly as possible."

Visit the SEW-EURODRIVE stand at QME and see all the latest products and services on offer from Australia's leading drive solution provider.



www.sew-eurodrive.com.au

Call **1300 SEW AUS** (1300 739 287) to be directed to your nearest office)
Melbourne (Head Office) Sydney Brisbane Townsville Perth Adelaide